



ZERO defect

CHARACTERISATION PLATFORM

ON-LINE AUTOMATIC SURFACE
INSPECTION & MEASUREMENTS

is
in-core
systèmes

HIGH-RESOLUTION INSPECTION AND CHARACTERISATION PLATFORM



Lineavision® platform, based on high-resolution image analysis, enables non-contact inspection and measurements on printed electronics surfaces. Using advanced characterisation capability, the platform analyzes single and multi-layer structures for defining and assessing quality, and various manufacturing process steps.

Benefits

MODULAR HIGH-RESOLUTION SOLUTION

- Inspection of either rigid, semi-rigid and flexible substrates
- Integration on production processes
- Clean room environment suitable

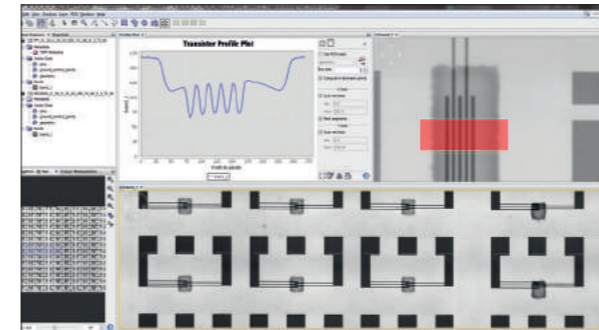
CHARACTERISATION OF COMPLEX PRODUCTS

- Two-dimensional control of printed geometries
- Optical metrology for single and multi-layer product
- Measurements and analysis down to micrometer scale
- Superior classification accuracy

PRODUCTION YIELD OPTIMIZATION

- Control process deviations
- Correlate visual detection results with electrical failures
- Major waste reduction and quality compliance

Versatile software application

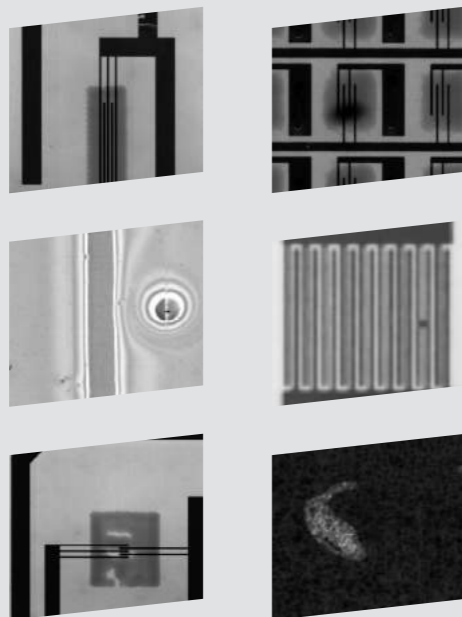


Characterisation

- Product/process development
- Selective analysis using interactive tool:
 - Plot profiles,
 - Histograms,
 - Statistical computing,
 - Overlap layers management,
 - Dimensional measurements (area distances, position, stretching, ...)

Automatic control

- Pattern definition
 - External files
 - Self-learning
- Traceability per sheet / module / circuit / layer



From opaque to transparent, rigid or flexible substrate.

For various process steps: coating, printing, laminating, encapsulating, scribing, patterning, embossing, drying or annealing...

CHARACTERISATION OF ALL PROCESS STEPS

Dimensional measurements
position control
of layers and
elements,
Stacking/
alignment.

Quality assessment
Foreign particles
inclusion, Scratches,
Structuring and laser
scribing defects,
Pattern and print
quality.

Correlation on
other electrical
failures and
visual defects.

OLEDs

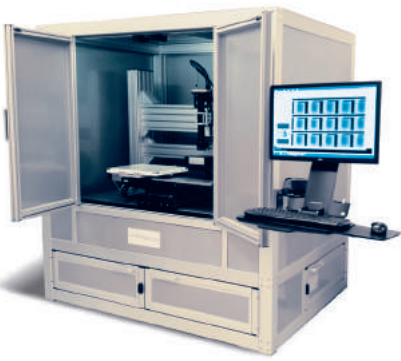
- Lighting
- Flexible displays
- OPV (Flexible Solar panels)

ELECTRICAL COMPONENTS

Flexible batteries, Printed circuits, RFID antennas/ label, sensors, Transistors.

SMART SYSTEMS

- Smart cards
- Complex systems



OUR RANGE OF **SERVICES**

SYSTEM SPECIFICATIONS

- Definition and evaluation of project
- Feasibility study
- Customization
- Flexibility/adaptation to future needs

COMMISSIONING

- Installation
- Training
- Start-up

GOLD SUPPORT

- Telephone hotline
- Dedicated technical experts
- Remote access
- Quick response time

SERVICES

- Onsite repairs
- Spare parts
- Preventive maintenance



In-Core Système France
10 rue Ampère - 69680 Chassieu
Tél : +33 (0)4 69 84 16 68
www.incore-systemes.com

